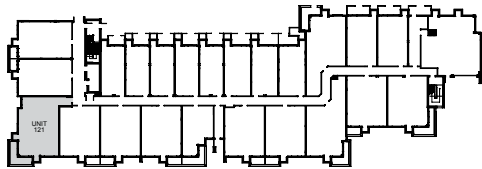
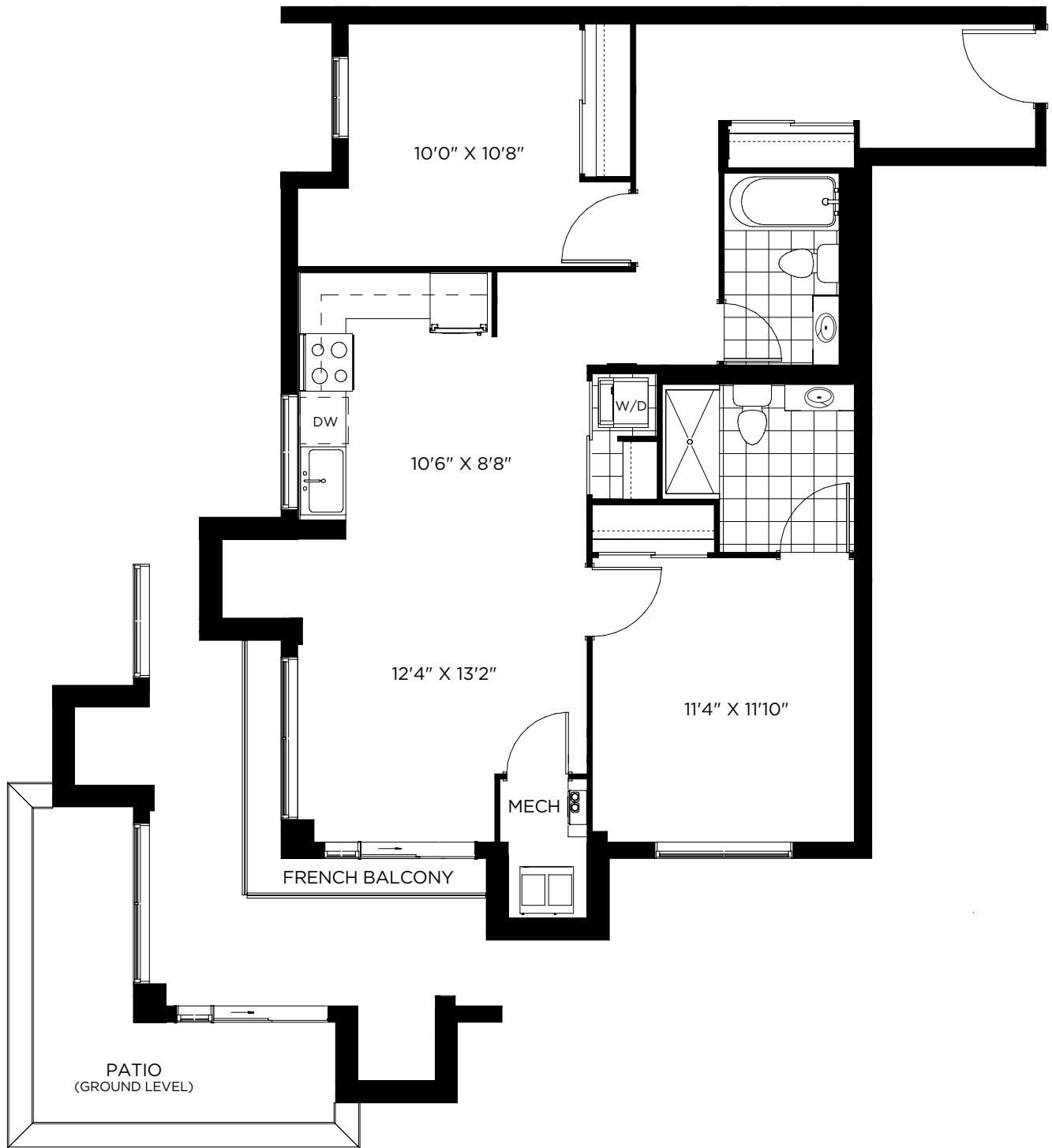


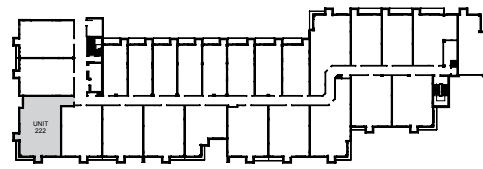
# Schedule A

# Gelato BF 988 sq.ft.

D-2



Ground Level



2nd Level

Plans and specifications are subject to change without notice. Size and location of windows may vary from those shown on this schedule. Actual usable floor space may vary from the stated floor area. For more information on the method of calculating the floor area of any unit, reference should be made to Builder Bulletin No. 22 published by the TWC. Either sliding doors (as shown on plan) or trimmed archway, subject to Ontario Building Code. E. & O.E.

Purchaser Initial Here: \_\_\_\_\_

Vendor Initial Here: \_\_\_\_\_

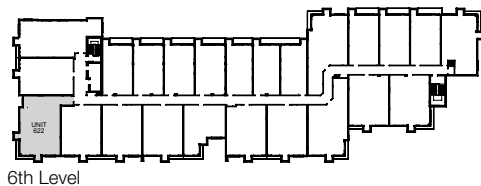
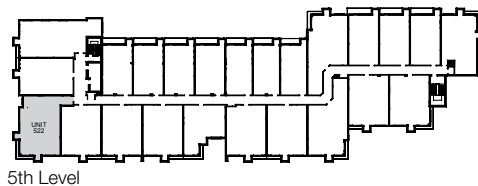
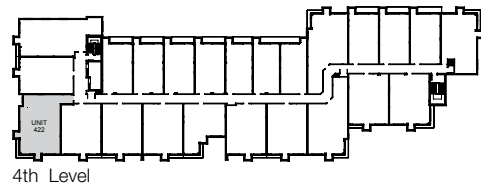
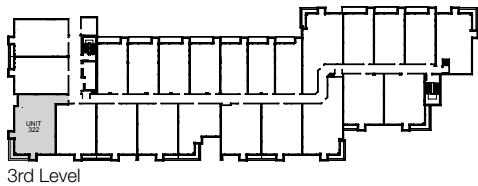
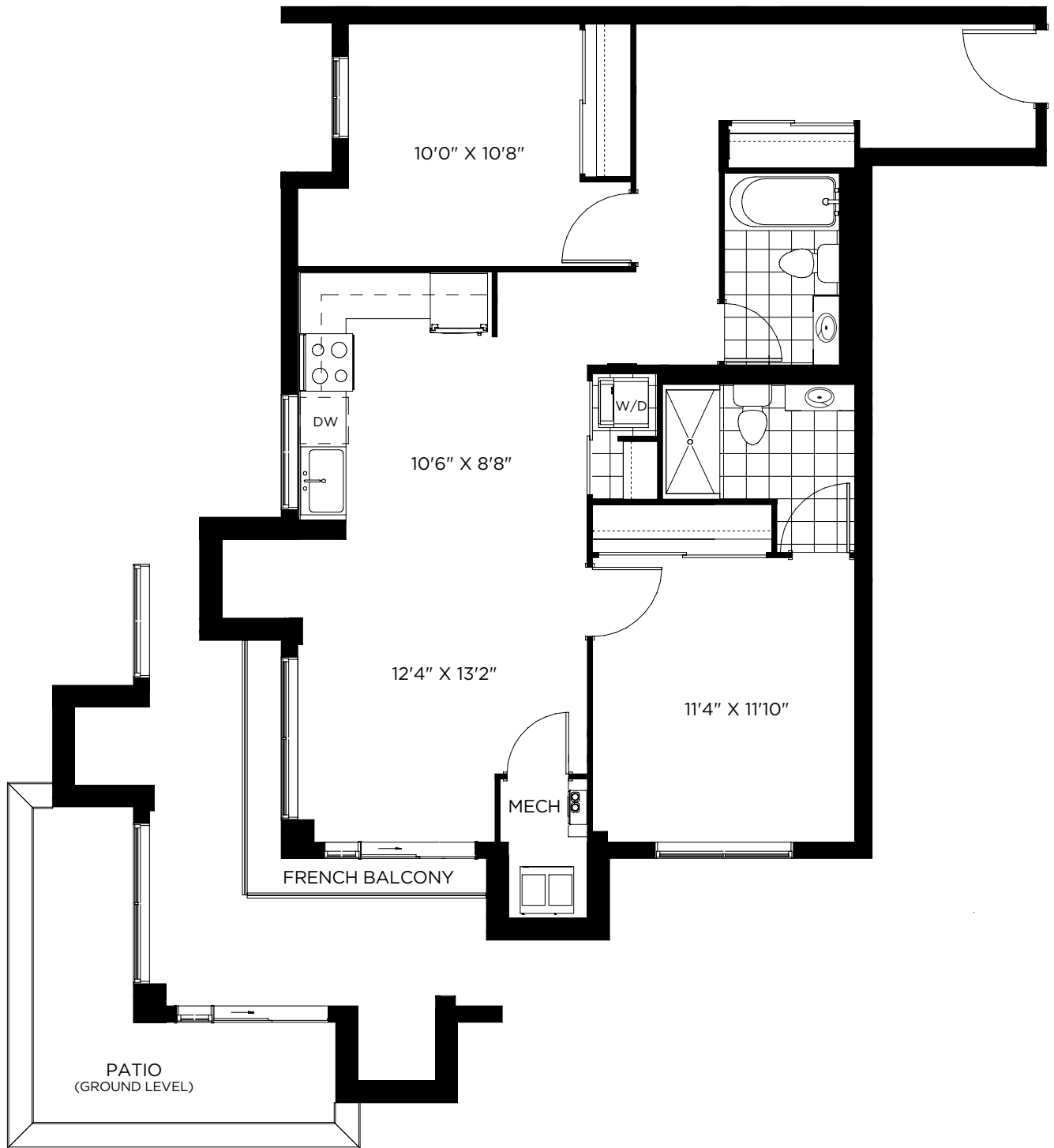
Suite #: \_\_\_\_\_ Floor #: \_\_\_\_\_



# Schedule A

# Gelato 988 sq.ft.

D-2



Plans and specifications are subject to change without notice. Size and location of windows may vary from those shown on this schedule. Actual usable floor space may vary from the stated floor area. For more information on the method of calculating the floor area of any unit, reference should be made to Builder Bulletin No. 22 published by the TWC. Either sliding doors (as shown on plan) or trimmed archway, subject to Ontario Building Code. E. & O.E.

Purchaser Initial Here: \_\_\_\_\_

Vendor Initial Here: \_\_\_\_\_

Suite #: \_\_\_\_\_ Floor #: \_\_\_\_\_

